



**Polop Hills Nature**  
RESIDENCIAL

**alibuilding**  
Construimos tu Hogar

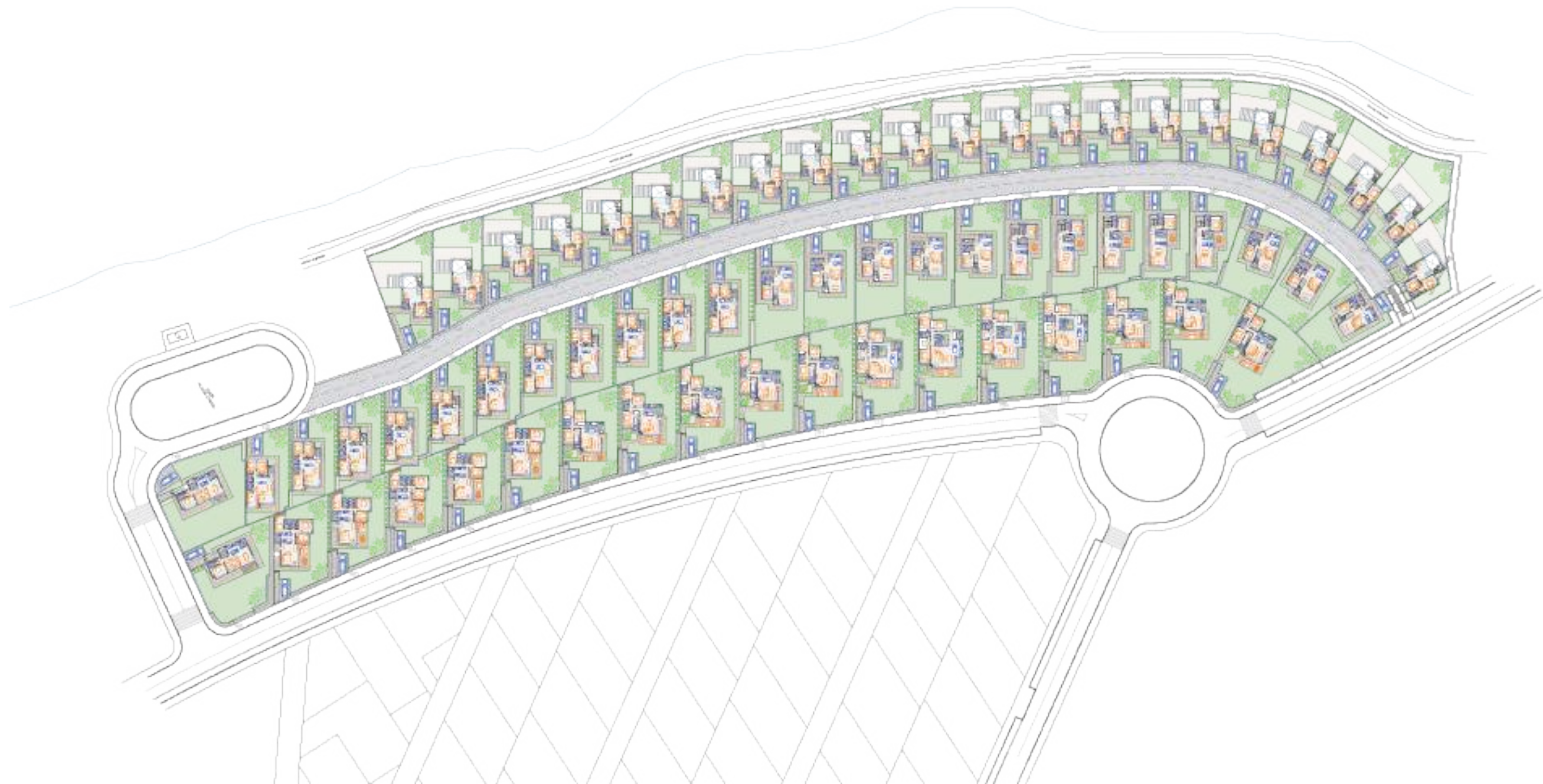


- Viviendas Residencial Polop Hills Nature

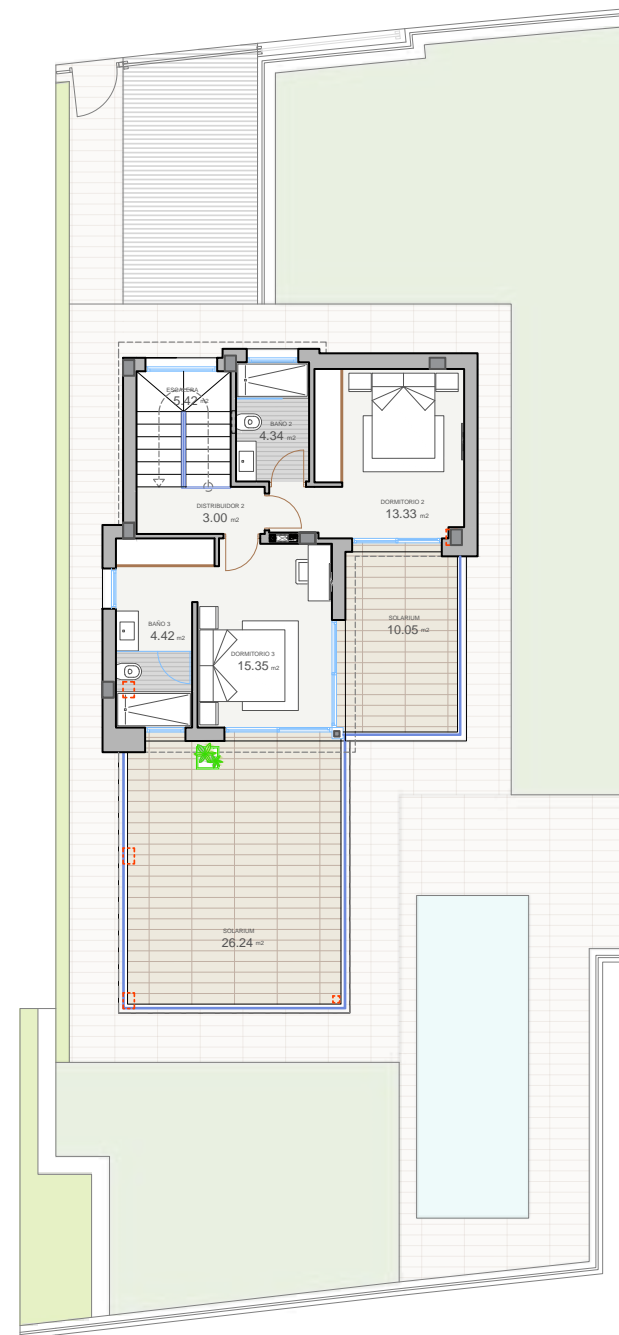
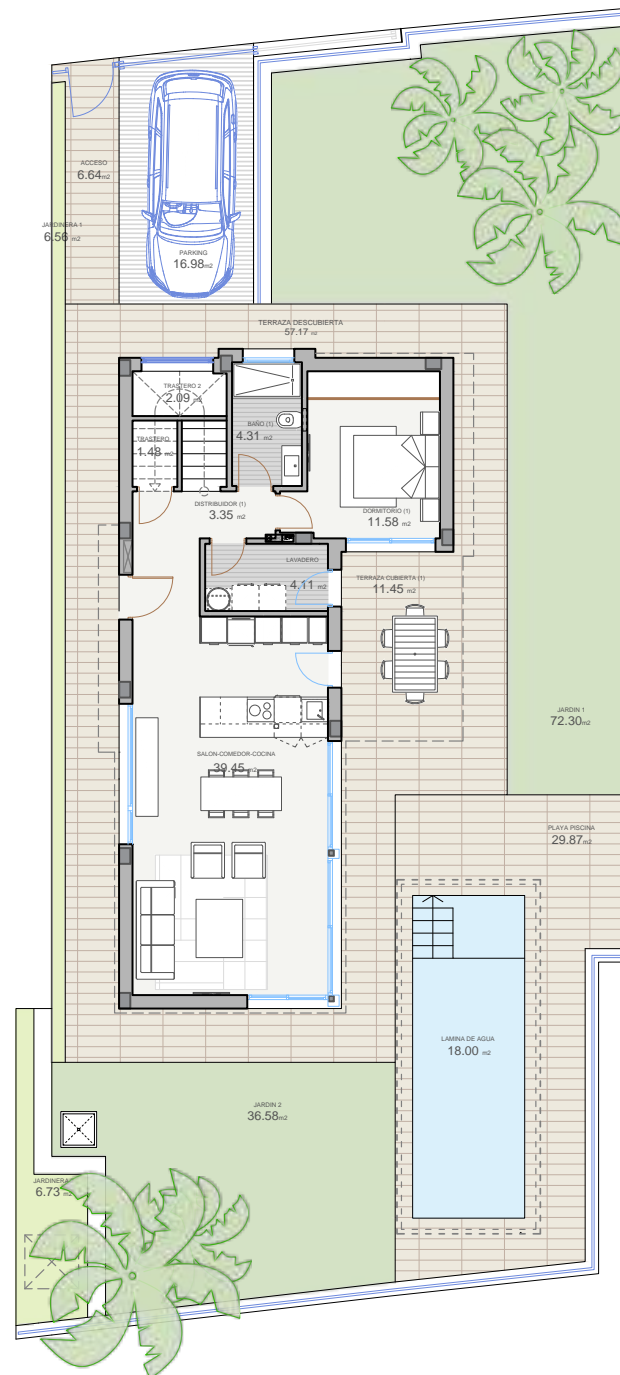
65 viviendas aisladas y zonas comunes



**Polop Hills Nature**  
RESIDENCIAL



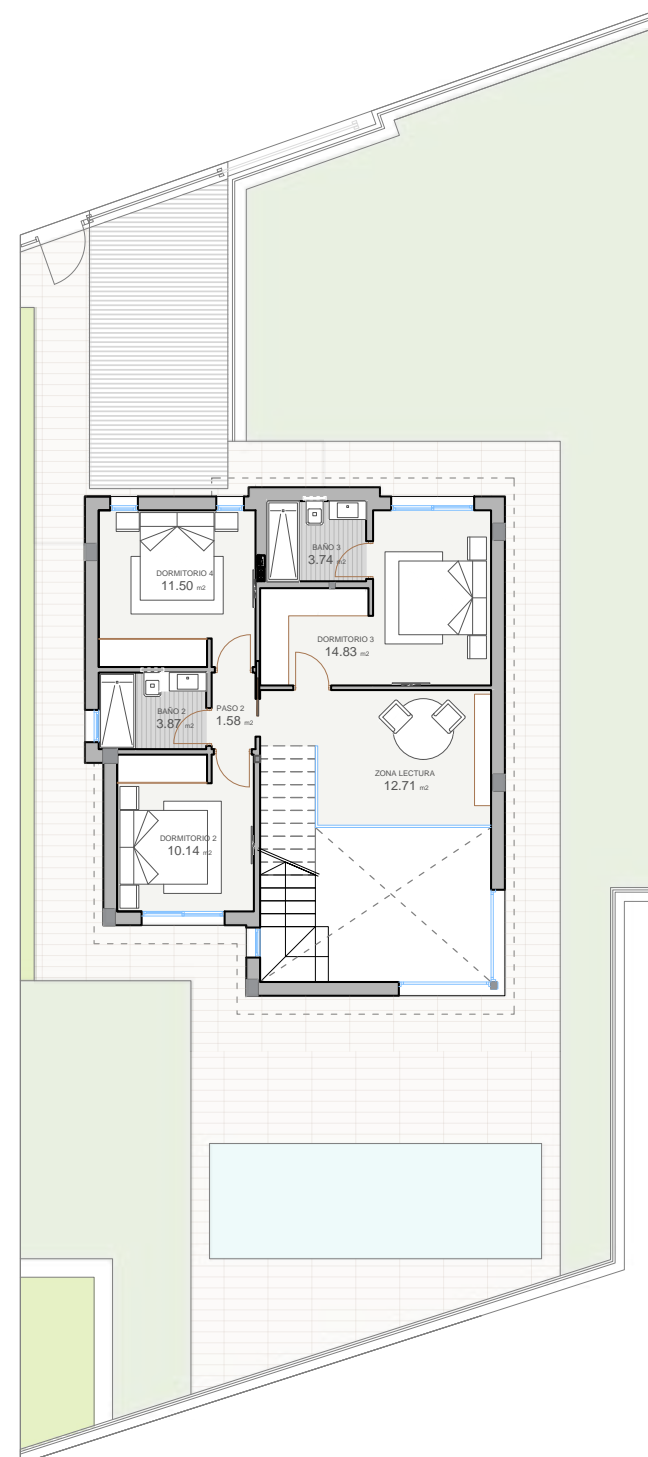
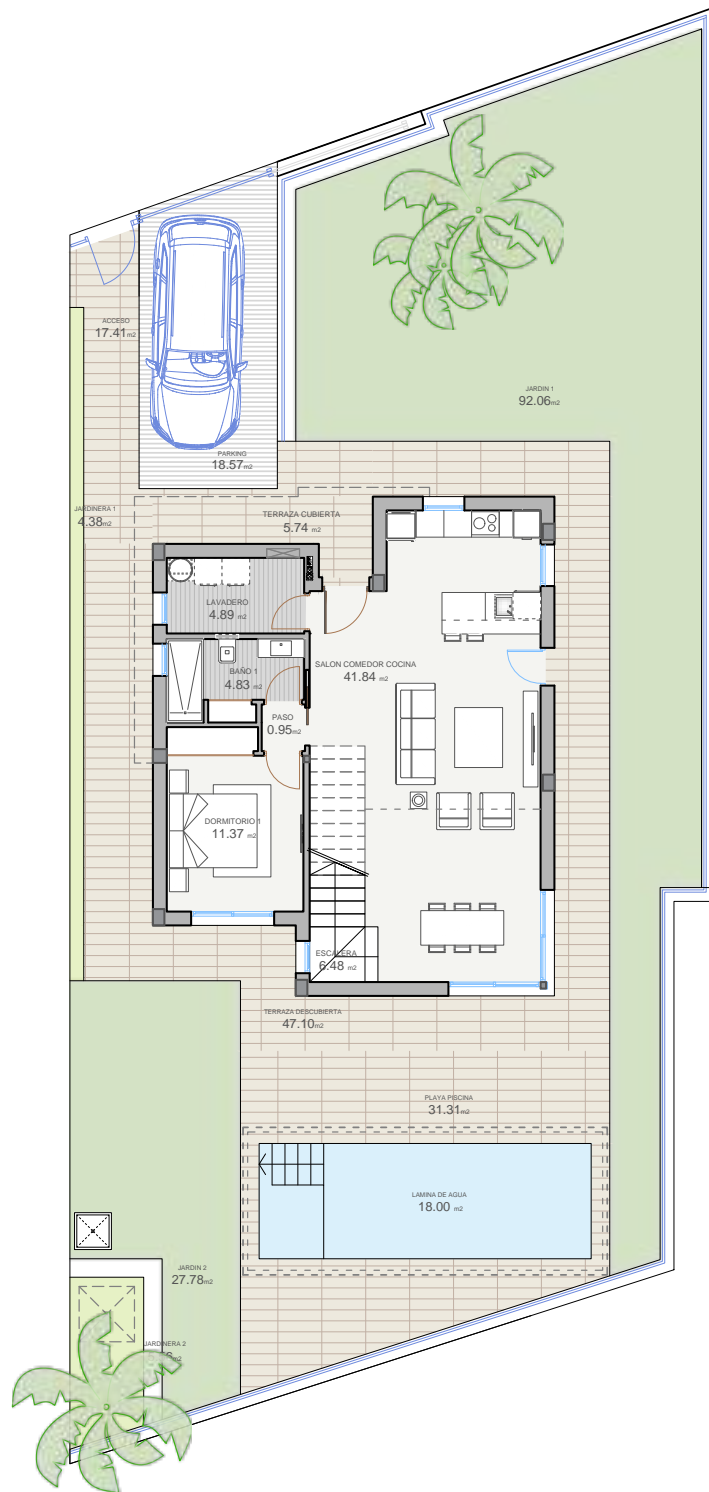
NOTA LEGAL: La presente información gráfica es orientativa. La sociedad vendedora se reserva el derecho a efectuar las modificaciones que fuesen motivadas por exigencias técnicas, legales o comerciales.



TIPOLOGÍA A

Superficies /

Superficie de parcela	368,56 m <sup>2</sup>
Salón-comedor-cocina	39,45 m <sup>2</sup>
Lavadero	4,11 m <sup>2</sup>
Distribuidor PB	3,35 m <sup>2</sup>
Trastero	3,57 m <sup>2</sup>
Dormitorio 1	11,58 m <sup>2</sup>
Baño 1	4,31 m <sup>2</sup>
Útil interior PB	66,37 m <sup>2</sup>
Distribuidor P1	3,00 m <sup>2</sup>
Dormitorio 2	13,33 m <sup>2</sup>
Dormitorio 3	15,35 m <sup>2</sup>
Baño 2	4,34 m <sup>2</sup>
Baño 3	4,42 m <sup>2</sup>
Escalera	5,42 m <sup>2</sup>
Útil interior P1	45,86 m <sup>2</sup>
Terraza cubierta	11,45 m <sup>2</sup>
Útil exterior	11,45 m <sup>2</sup>
Total superficie útil	123,68 m <sup>2</sup>
Acceso	6,64 m <sup>2</sup>
Parking	16,98 m <sup>2</sup>
Jardinera	13,29 m <sup>2</sup>
Jardín	108,88 m <sup>2</sup>
Terraza descubierta	57,17 m <sup>2</sup>
Terraza solarium	36,31 m <sup>2</sup>
Playa piscina	29,87 m <sup>2</sup>
Superficies exteriores	269,14 m <sup>2</sup>
Construida vivienda PB	83,28 m <sup>2</sup>
Construida vivienda P1	52,65 m <sup>2</sup>
Construida terraza	11,45 m <sup>2</sup>
Construida piscina	23,10 m <sup>2</sup>
Total construida	170,48 m <sup>2</sup>



TIPOLOGÍA B

Superficies /

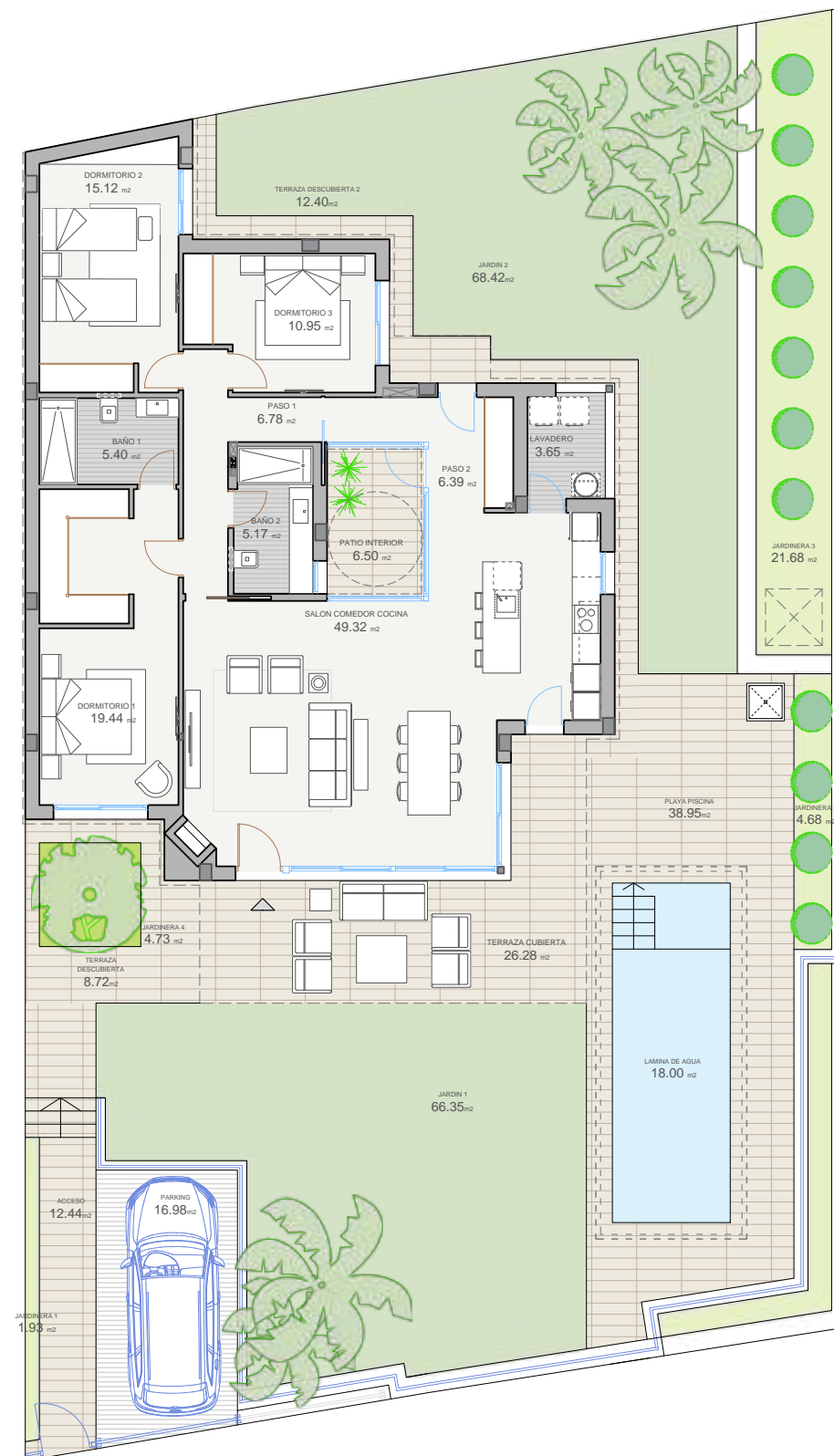
Superficie de parcela	397,63 m <sup>2</sup>
Salón-comedor-cocina	41,84 m <sup>2</sup>
Lavadero	4,89 m <sup>2</sup>
Paso	0,93 m <sup>2</sup>
Dormitorio 1	11,37 m <sup>2</sup>
Baño 1	4,83 m <sup>2</sup>
Útil interior PB	63,86 m <sup>2</sup>
Zona lectura	12,71 m <sup>2</sup>
Dormitorio 2	10,14 m <sup>2</sup>
Dormitorio 3	14,83 m <sup>2</sup>
Dormitorio 4	11,50 m <sup>2</sup>
Baño 2	3,87 m <sup>2</sup>
Baño 3	3,92 m <sup>2</sup>
Escalera	6,48 m <sup>2</sup>
Útil interior P1	63,45 m <sup>2</sup>
Terraza cubierta	5,74 m <sup>2</sup>
Útil exterior	5,74 m <sup>2</sup>
Total superficie útil	133,05 m <sup>2</sup>
Acceso	17,41 m <sup>2</sup>
Parking	18,57 m <sup>2</sup>
Jardinera	17,14 m <sup>2</sup>
Jardín	168,74 m <sup>2</sup>
Terraza descubierta	42,36 m <sup>2</sup>
Playa piscina	31,31 m <sup>2</sup>
Superficies exteriores	244,17 m <sup>2</sup>
Construida vivienda PB	83,83 m <sup>2</sup>
Construida vivienda P1	73,55 m <sup>2</sup>
Construida terraza	5,74 m <sup>2</sup>
Construida piscina	23,10 m <sup>2</sup>
Total construida	186,22 m <sup>2</sup>



TIPOLOGÍA C

Superficies /

Superficie de parcelan	488,27 m <sup>2</sup>
Salón-comedor-cocina	49,32 m <sup>2</sup>
Lavadero	3,65 m <sup>2</sup>
Paso	13,17 m <sup>2</sup>
Dormitorio 1	19,44 m <sup>2</sup>
Baño 1	5,46 m <sup>2</sup>
Patio interior	6,50 m <sup>2</sup>
Dormitorio 2	15,12 m <sup>2</sup>
Dormitorio 3	10,95 m <sup>2</sup>
Baño 2	5,30 m <sup>2</sup>
Útil interior	128,91 m <sup>2</sup>
Terraza cubierta	28,43 m <sup>2</sup>
Útil exterior	28,43 m <sup>2</sup>
Total superficie útil	157,34 m <sup>2</sup>
Acceso	12,44 m <sup>2</sup>
Parking	16,98 m <sup>2</sup>
Jardinera	33,02 m <sup>2</sup>
Jardín	134,77 m <sup>2</sup>
Terraza descubierta	21,12 m <sup>2</sup>
Playa piscina	38,95 m <sup>2</sup>
Útil exterior	257,28 m <sup>2</sup>
Construida vivienda	141,55 m <sup>2</sup>
Construida terraza	32,96 m <sup>2</sup>
Construida piscina	23,10 m <sup>2</sup>
Total construida	197,61 m <sup>2</sup>





**Polop Hills Nature**

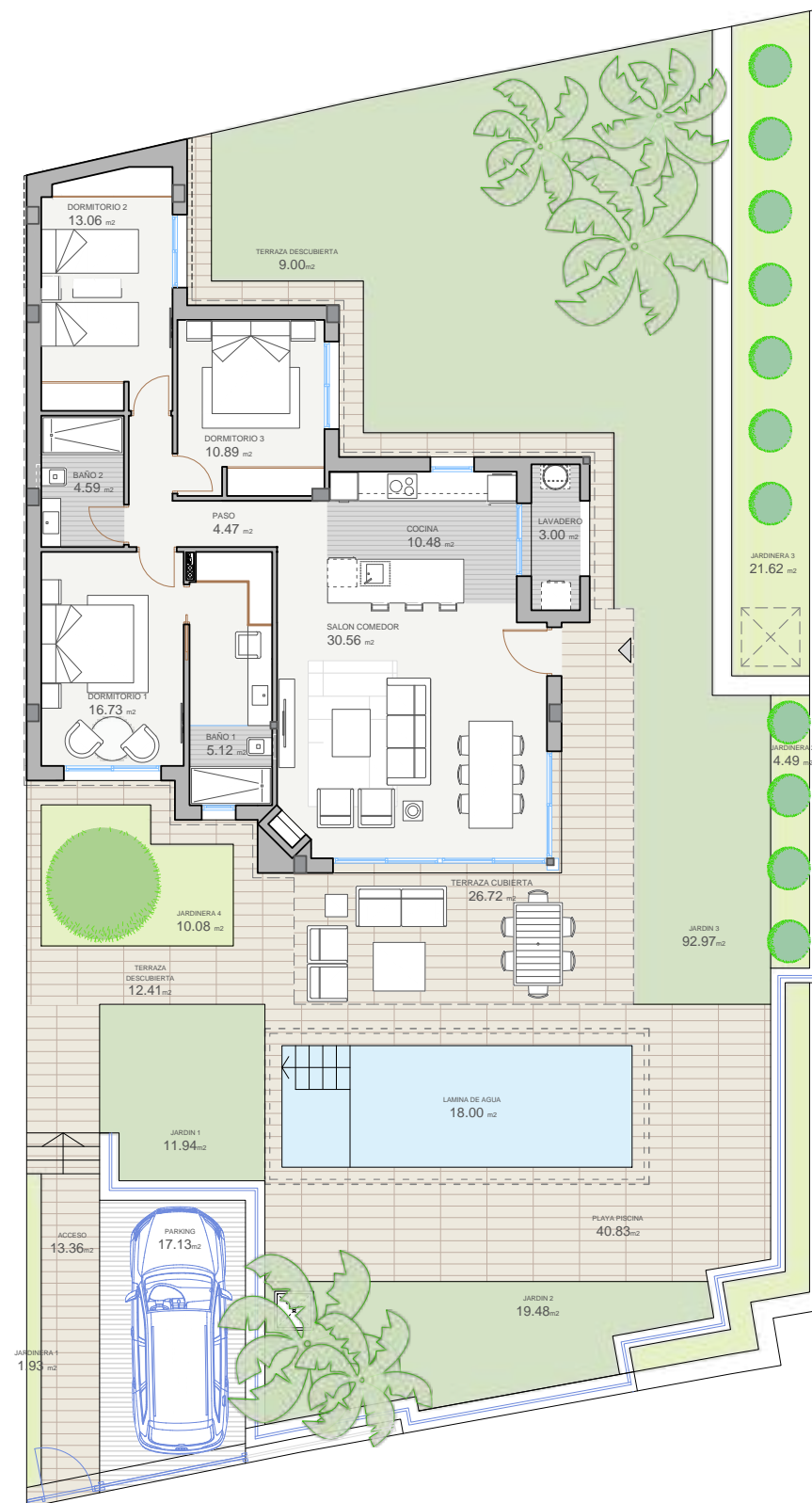
RESIDENCIAL

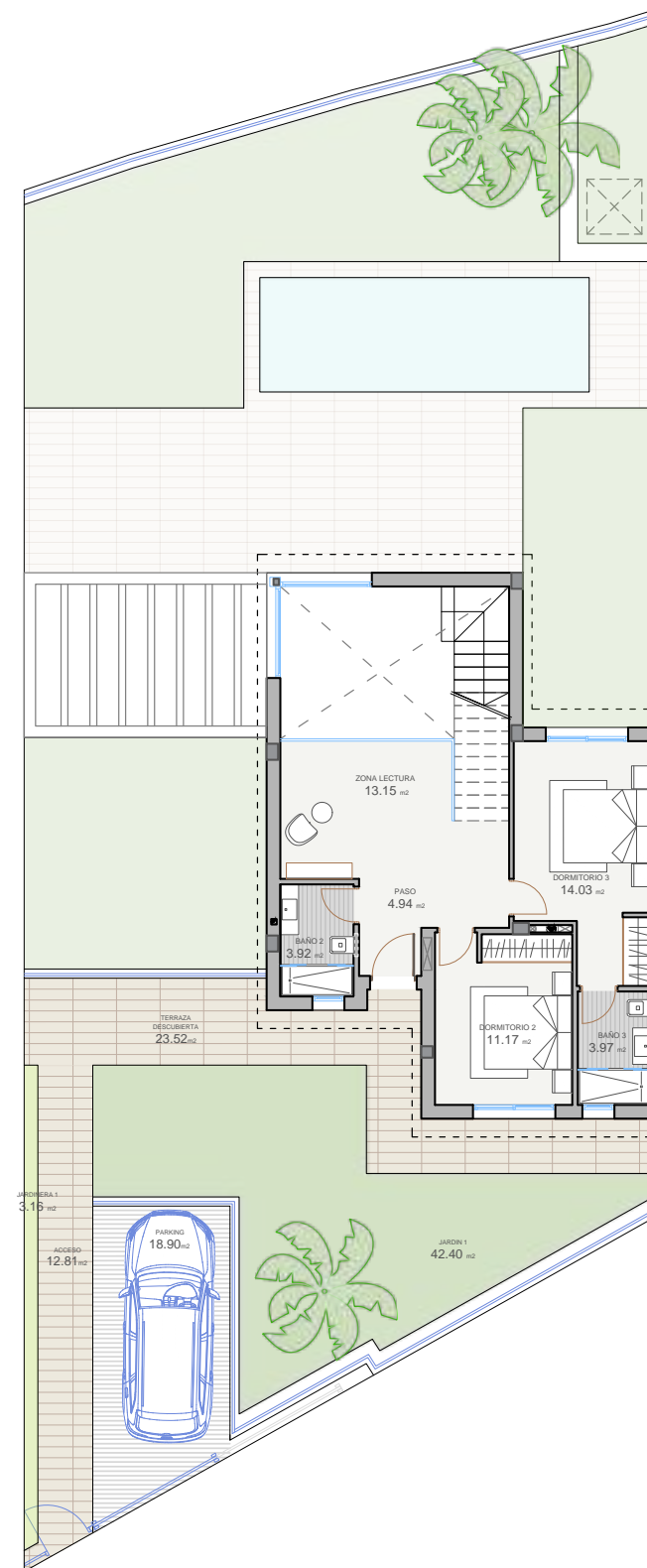
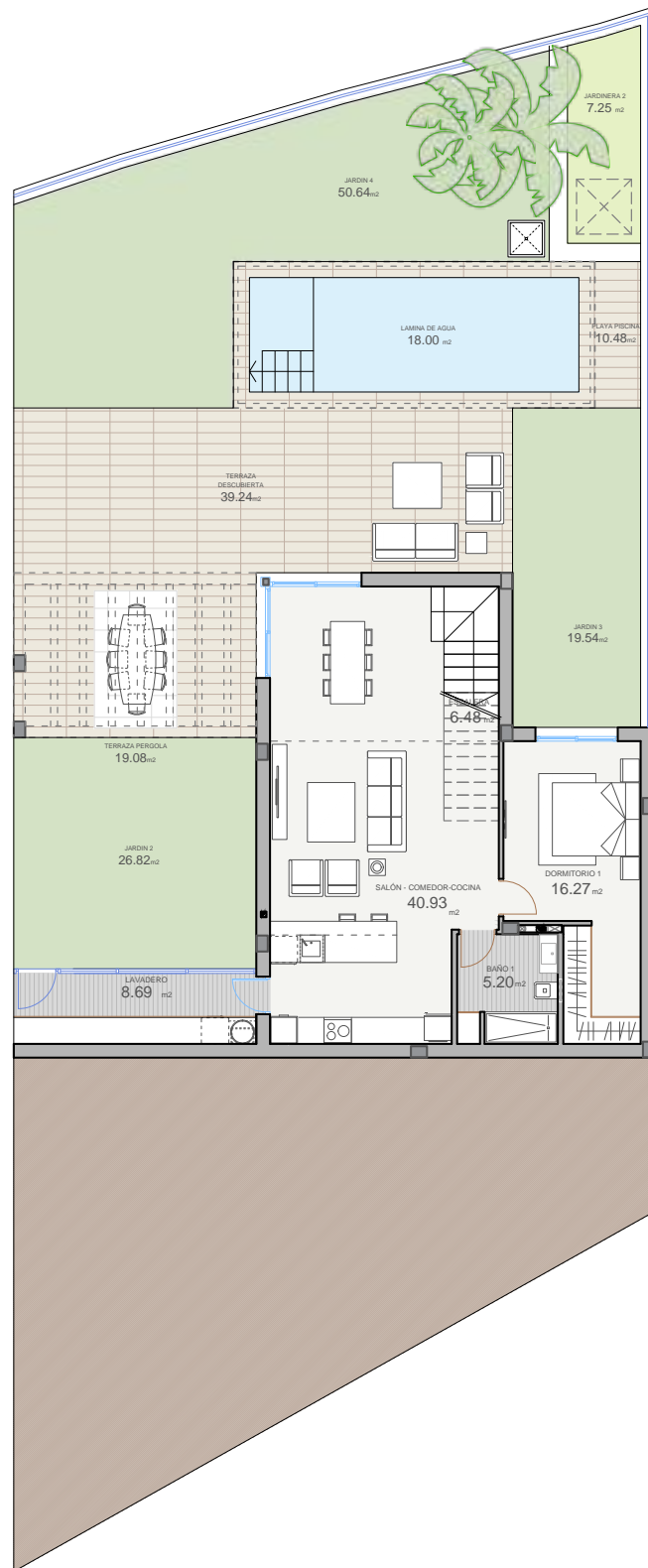


TIPOLOGÍA D

Superficies /

Superficie de parcela	455,13 m <sup>2</sup>
Salón-comedor	30,56 m <sup>2</sup>
Cocina	10,48 m <sup>2</sup>
Lavadero	3,00 m <sup>2</sup>
Paso	4,47 m <sup>2</sup>
Dormitorio 1	16,73 m <sup>2</sup>
Baño 1	5,12 m <sup>2</sup>
Dormitorio 2	13,06 m <sup>2</sup>
Dormitorio 3	10,89 m <sup>2</sup>
Baño 2	4,59 m <sup>2</sup>
Útil interior	98,79 m <sup>2</sup>
Terraza cubierta	26,72 m <sup>2</sup>
Útil exterior	26,72 m <sup>2</sup>
Total superficie útil	125,62 m <sup>2</sup>
Acceso	13,36 m <sup>2</sup>
Parking	17,13 m <sup>2</sup>
Jardinera	38,12 m <sup>2</sup>
Jardín	124,39 m <sup>2</sup>
Terraza descubierta	21,41 m <sup>2</sup>
Playa piscina	40,83 m <sup>2</sup>
Útil exterior	255,24 m <sup>2</sup>
Construida vivienda	114,42 m <sup>2</sup>
Construida terraza	30,64 m <sup>2</sup>
Construida piscina	23,10 m <sup>2</sup>
Total construida	168,29 m <sup>2</sup>





TIPOLOGÍA E

Superficies /

Superficie de parcela	396,68 m <sup>2</sup>
Salón-comedor-cocina	40,93 m <sup>2</sup>
Lavadero	8,69 m <sup>2</sup>
Dormitorio 1	16,27 m <sup>2</sup>
Baño 1	5,20 m <sup>2</sup>
Escalera	6,48 m <sup>2</sup>
Útil interior PB	77,57 m <sup>2</sup>
Paso	4,94 m <sup>2</sup>
Zona lectura	13,15 m <sup>2</sup>
Dormitorio 2	11,17 m <sup>2</sup>
Dormitorio 3	14,03 m <sup>2</sup>
Baño 2	3,92 m <sup>2</sup>
Baño 3	3,97 m <sup>2</sup>
Útil interior P1	51,18 m <sup>2</sup>
Total superficie útil	128,75 m <sup>2</sup>
Acceso	12,81 m <sup>2</sup>
Parking	18,90 m <sup>2</sup>
Jardinera	10,41 m <sup>2</sup>
Jardín	139,40 m <sup>2</sup>
Terraza descubierta	81,84 m <sup>2</sup>
Playa piscina	10,48 m <sup>2</sup>
Útil exterior	273,84 m <sup>2</sup>
Construida vivienda PB	81,72 m <sup>2</sup>
Construida vivienda P1	65,97 m <sup>2</sup>
Construida lavadero	10,28 m <sup>2</sup>
Construida piscina	23,10 m <sup>2</sup>
Total construida	181,07 m <sup>2</sup>



**Polop Hills Nature**

RESIDENCIAL



TIPOLOGÍA F

Superficies /

Superficie de parcela	312,82 m <sup>2</sup>
Salón-comedor-cocina	38,90 m <sup>2</sup>
Lavadero	3,19 m <sup>2</sup>
Paso	1,50 m <sup>2</sup>
Dormitorio 1	14,05 m <sup>2</sup>
Baño 1	3,77 m <sup>2</sup>
Dormitorio 2	9,62 m <sup>2</sup>
Dormitorio 3	11,21 m <sup>2</sup>
Baño 2	3,68 m <sup>2</sup>
Útil interior	85,92 m <sup>2</sup>
Terraza cubierta	22,16 m <sup>2</sup>
Útil exterior	22,16 m <sup>2</sup>
Total superficie útil	108,08 m <sup>2</sup>
Acceso	7,09 m <sup>2</sup>
Parking	19,68 m <sup>2</sup>
Jardinera	15,84 m <sup>2</sup>
Jardín	92,12 m <sup>2</sup>
Terraza descubierta	20,60 m <sup>2</sup>
Playa piscina	19,41 m <sup>2</sup>
Útil exterior	174,74 m <sup>2</sup>
Construida vivienda	98,67 m <sup>2</sup>
Construida terraza	25,73 m <sup>2</sup>
Construida piscina	23,10 m <sup>2</sup>
Total construida	147,50 m <sup>2</sup>

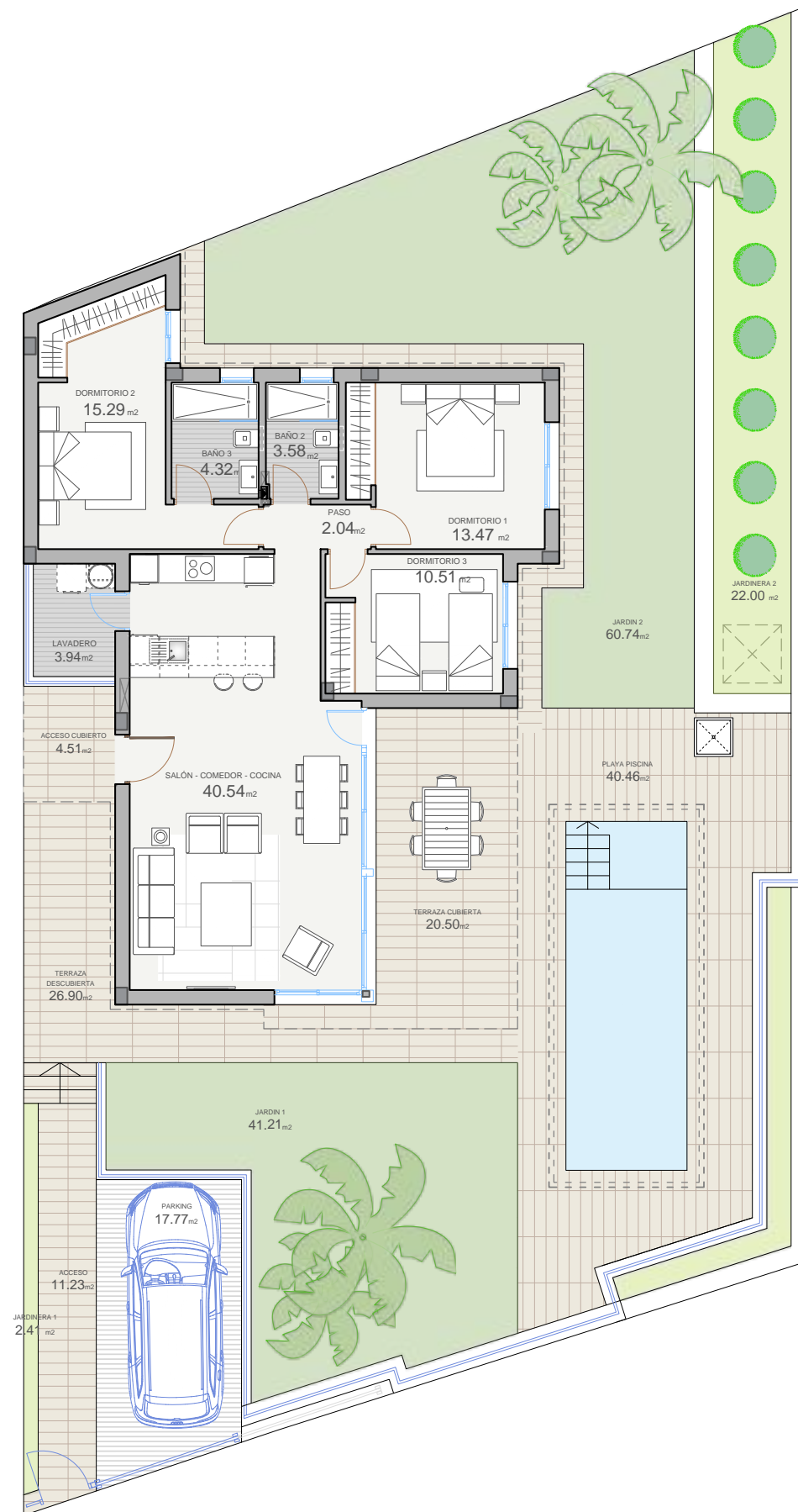




TIPOLOGÍA G

Superficies /

Superficie de parcela	411,97 m <sup>2</sup>
Salón-comedor-cocina	40,54 m <sup>2</sup>
Lavadero	3,94 m <sup>2</sup>
Paso	2,04 m <sup>2</sup>
Dormitorio 1	15,29 m <sup>2</sup>
Baño 1	4,32 m <sup>2</sup>
Dormitorio 2	13,47 m <sup>2</sup>
Dormitorio 3	10,51 m <sup>2</sup>
Baño 2	3,58 m <sup>2</sup>
Útil interior	93,69 m <sup>2</sup>
Terraza cubierta	20,50 m <sup>2</sup>
Total superficie útil exterior	20,50 m <sup>2</sup>
Total superficie útil	114,19 m <sup>2</sup>
Acceso	11,23 m <sup>2</sup>
Parking	17,77 m <sup>2</sup>
Jardinera	24,41 m <sup>2</sup>
Jardín	101,95 m <sup>2</sup>
Terraza descubierta	26,90 m <sup>2</sup>
Playa piscina	40,69 m <sup>2</sup>
Útil exterior	222,95 m <sup>2</sup>
Construida vivienda	108,08 m <sup>2</sup>
Construida terraza	29,79 m <sup>2</sup>
Construida piscina	23,10 m <sup>2</sup>
Total construida	160,97 m <sup>2</sup>

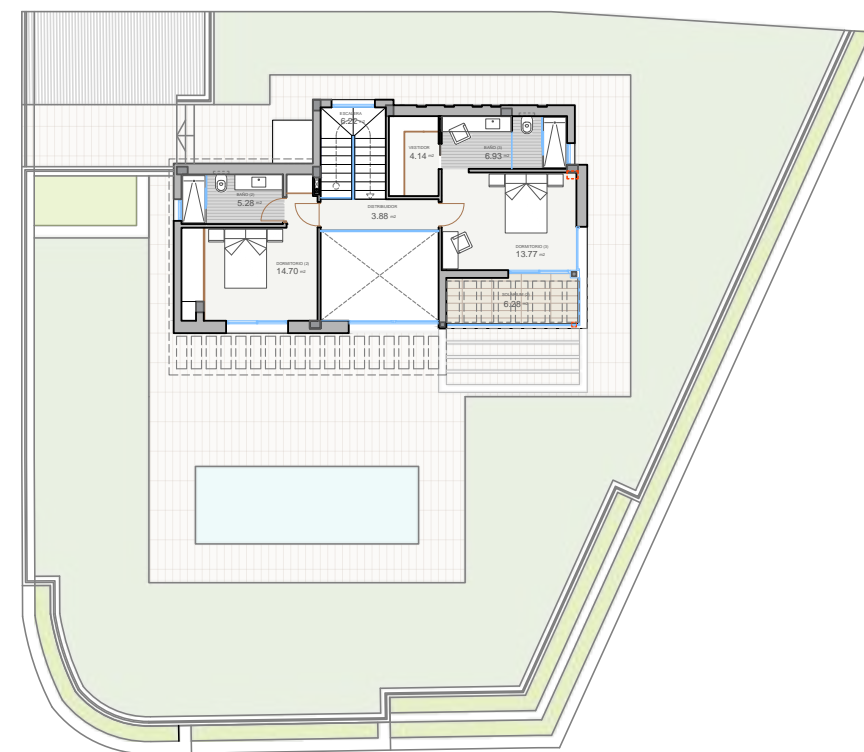
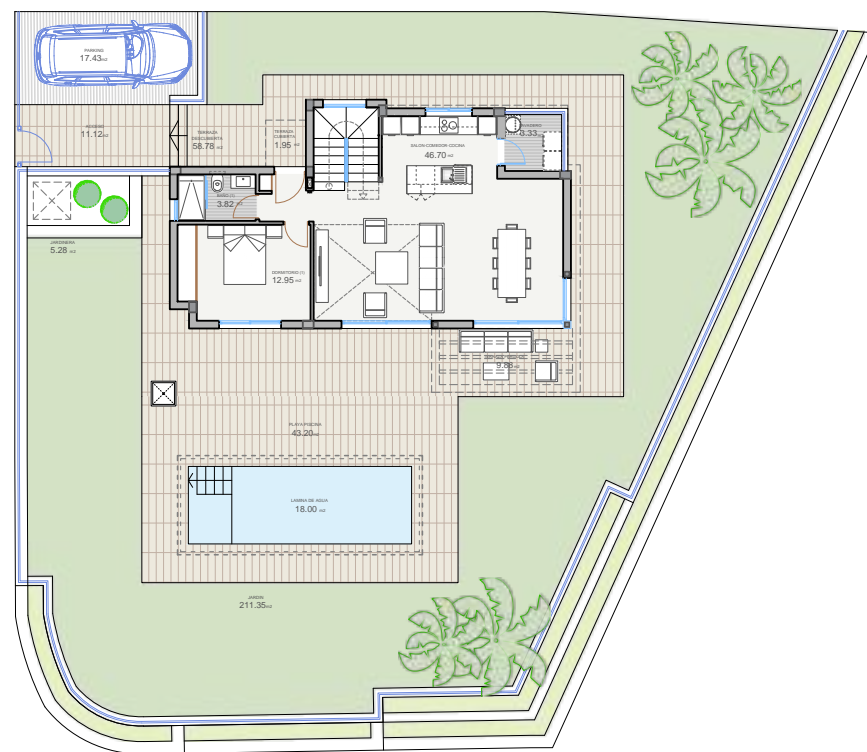




TIPOLOGÍA H

Superficies /

Superficie de parcela	534,14 m <sup>2</sup>
Salón-comedor-cocina	46,70 m <sup>2</sup>
Lavadero	3,33 m <sup>2</sup>
Dormitorio 1	12,95 m <sup>2</sup>
Baño 1	3,82 m <sup>2</sup>
Escalera	6,22 m <sup>2</sup>
Útil interior PB	73,02 m <sup>2</sup>
Paso	3,88 m <sup>2</sup>
Dormitorio 2	14,70 m <sup>2</sup>
Baño 2	5,28 m <sup>2</sup>
Dormitorio 3	13,77 m <sup>2</sup>
Vestidor	4,14 m <sup>2</sup>
Baño 3	6,93 m <sup>2</sup>
Útil interior P1	48,70 m <sup>2</sup>
Terraza cubierta	1,95 m <sup>2</sup>
Útil exterior	1,95 m <sup>2</sup>
Total superficie útil	123,67 m <sup>2</sup>
Acceso	11,12 m <sup>2</sup>
Parking	17,43 m <sup>2</sup>
Jardinera	5,28 m <sup>2</sup>
Jardín	211,35 m <sup>2</sup>
Terraza descubierta	79,78 m <sup>2</sup>
Terraza solarium	6,28 m <sup>2</sup>
Playa piscina	43,20 m <sup>2</sup>
Útil exterior	374,44 m <sup>2</sup>
Construida vivienda PB	79,66 m <sup>2</sup>
Construida vivienda P1	61,76 m <sup>2</sup>
Construida lavadero	6,05 m <sup>2</sup>
Construida piscina	23,10 m <sup>2</sup>
Total construida	170,57 m <sup>2</sup>



- Viviendas Residencial Polop Hills Nature

65 viviendas aisladas y zonas comunes



**Polop Hills Nature**  
RESIDENCIAL



**alibuilding**  
Construimos tu Hogar



- Viviendas Residencial Polop Hills Nature

65 viviendas aisladas y zonas comunes



**Polop Hills Nature**  
RESIDENCIAL



**alibuilding**  
Construimos tu Hogar



- Viviendas Residencial Polop Hills Nature

65 viviendas aisladas y zonas comunes



**Polop Hills Nature**  
RESIDENCIAL



**alibuilding**  
Construimos tu Hogar



- Viviendas Residencial Polop Hills Nature

65 viviendas aisladas y zonas comunes



**Polop Hills Nature**  
RESIDENCIAL



**alibuilding**  
Construimos tu Hogar







- Viviendas Residencial Polop Hills Nature

65 viviendas aisladas y zonas comunes



**Polop Hills Nature**  
RESIDENCIAL



**alibuilding**  
Construimos tu Hogar



- Viviendas Residencial Polop Hills Nature

65 viviendas aisladas y zonas comunes



**Polop Hills Nature**  
RESIDENCIAL



**alibuilding**  
Construimos tu Hogar





- Viviendas Residencial Polop Hills Nature

65 viviendas aisladas y zonas comunes



**Polop Hills Nature**  
RESIDENCIAL



**alibuilding**  
Construimos tu Hogar





### Foundations, roofs and façades

Foundations laid using micropiles firmly embedded and structure in reinforced concrete, complying with current regulations.

- Roofs will be flat and non-traversable. They will be executed with screeds to falls, waterproofing, insulation and exterior finishes.
- Façades will consist of double sheet and interior chamber with thermal insulation in accordance with the Technical Building Code and ceramic exterior coating, made of natural stone and single-layer mortar with silicate paint the same colour as the single layer.
- Interior divisions made of partitioning with ceramic brick. Thermal and acoustic insulation in accordance with the Technical Building Code.



### Exterior carpentry and window panes

PVC with air chamber and colour according to project, with double window pane with air chamber and solar control.

- Swinging/sliding windows and doors.
- Roll-up shutters made of aluminium sun shades filled with polyurethane foam in bedrooms, which are motorised in living room and master bedroom.



### Internal carpentry

Armour-plated door in access to home, made with steel structure and frame, matt white lacquered finish inside.

- Connecting doors in DM matt white colour.
- Built-in wardrobes. Wardrobe doors with the same finish as the connecting doors. This includes a luggage shelf and coat rack. Dressing rooms finished with textured paper.



### Flooring, tiling, ceilings and paint

- Porcelain stoneware flooring throughout the house and non-slip flooring outside (C3).
- Tiling in bathrooms made with ceramic tile.
- False ceiling throughout the house, which is removable in one of the bathrooms.
- Vertical and horizontal walls of the house in plain plastic light-colour paint.



### Kitchen

- Equipped with high and low furniture
- Countertop, front and sides of low furniture made of silica agglomerate.
- Equipped with induction hob, oven, extractor fan and stainless steel sink with swivelling chrome mixer tap.
- It is equipped with a refrigerator and dishwasher with integrated panels, and a microwave.



### Sanitary fittings and taps

Top-quality glazed white porcelain sanitary ware.

- Wall-mounted toilet with concealed cistern.
- Shower floors with anti-slip finish.
- Chrome mixer tap.
- Installation of unit with porcelain washbasin and mirrors in bathrooms.
- Shower screens in both bathrooms.



### Electricity, telecommunications and home automation facilities

Interior electrical installation equipped with top quality mechanisms.

- Data ports in living room and bedrooms.
- Pre-installation for charging electric vehicles.
- Communal antenna and TV sockets in living room, bedrooms and outdoor terrace on ground floor, according to regulations.



### Air conditioning and ventilation

The air conditioning installation will consist of a heat pump, ducts in the false ceiling, and supply grilles in the lounge and bedrooms. A thermostat will be available to regulate temperature.

- Aerothermal sanitary hot water supply system.



### Plot

Private plot of each house, fenced with masonry wall and metal enclosure.

- Internal parking for vehicles, according to plot.
- Finished floor with use of artificial grass, gardening and non-slip ceramic flooring according to CTE.
- Private swimming pool 2,50m x 7,20m (internal dimensions), water surface area 18m<sup>2</sup>.
- Shower in the pool area.



### Residential complex

Housing development perimeter enclosed, with surveillance cameras, according to project design.

- Solar panels according to regulations.
- Housing development has an access gate with automatic opening activated by remote control.



Energy rating of the project: Bt





# Polop Hills *Nature*

R E S I D E N C I A L